



"ENSURING HIGH LEVELS OF LEARNING FOR ALL"

BAINBRIDGE-GUILFORD

CENTRAL SCHOOL DISTRICT



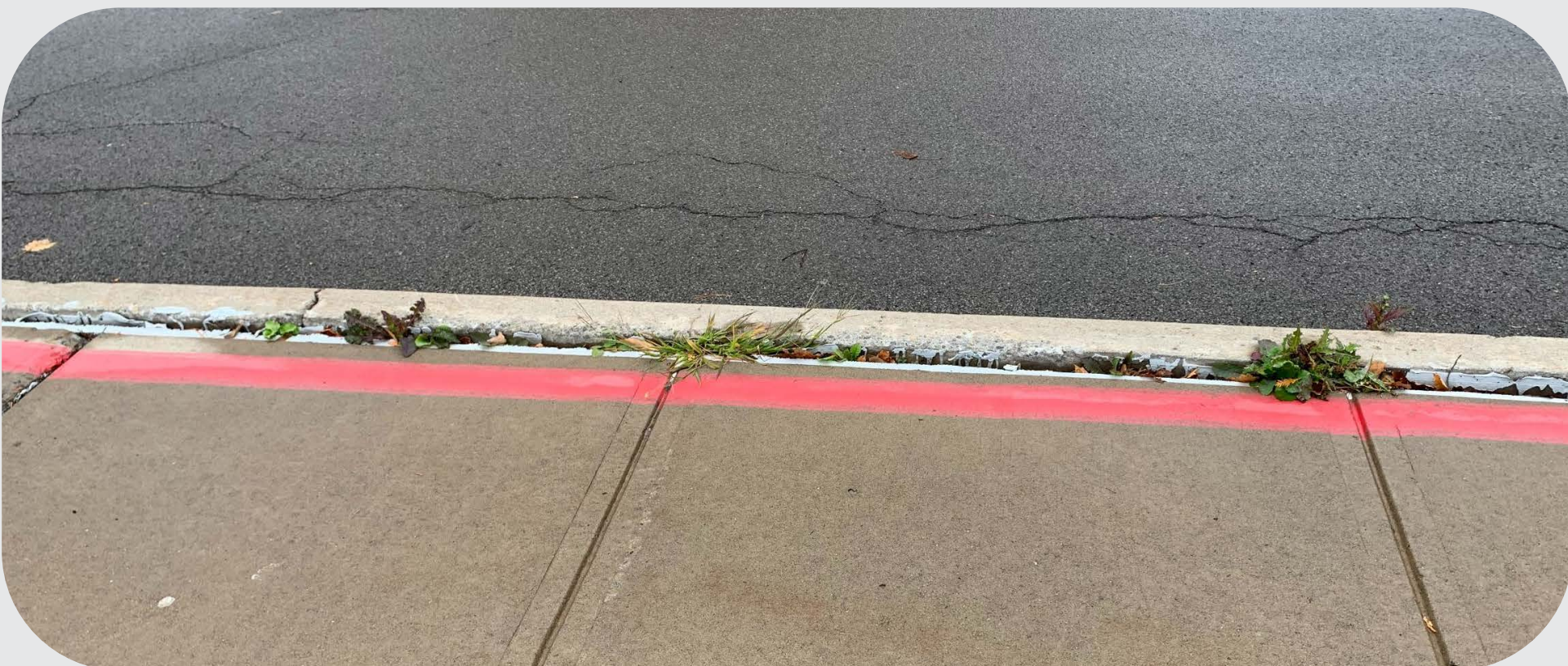
GREENLAWN ELEMENTARY

- Underground fuel tank replacement and upgrade
- Sidewalk and pavement replacement at front and main parking lots, student drop-off, and bus loop.
- Corridor locker replacement
- Main office / faculty room improvements
- HVAC system replacement
- Tennis Court reconstruction

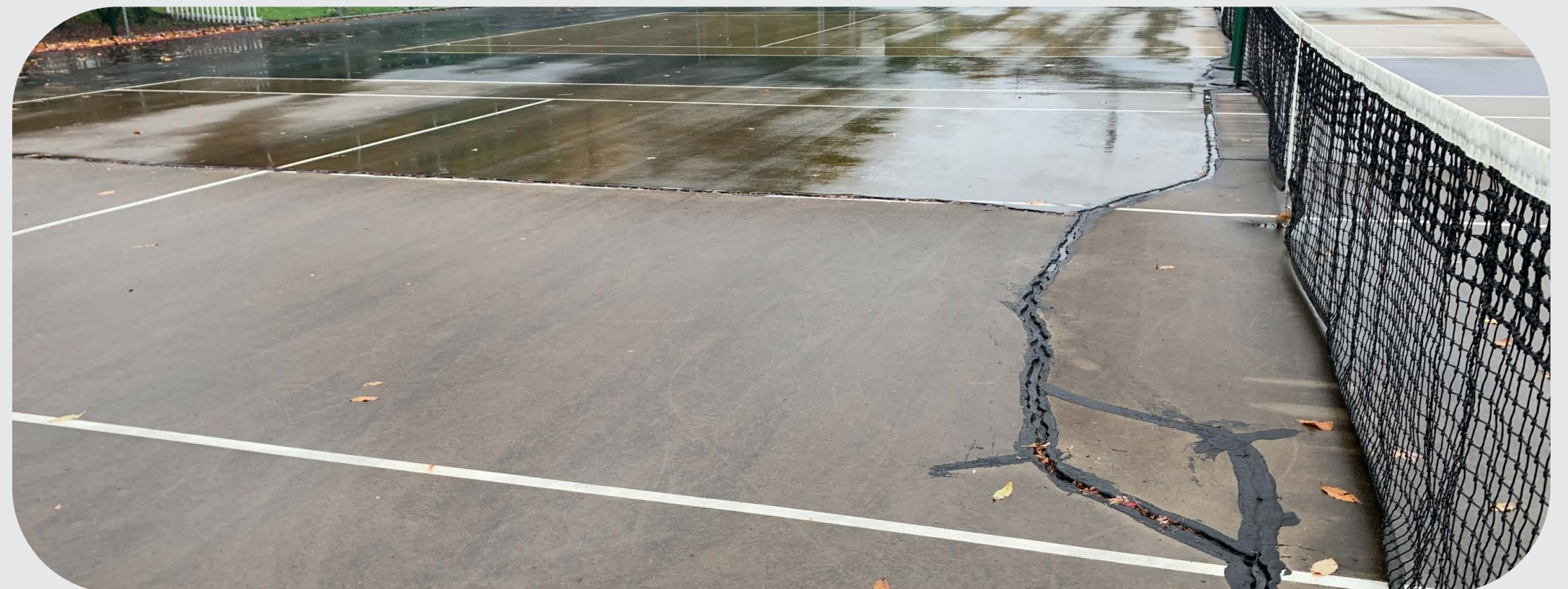
Outdated Lockers



Deteriorating Sidewalks



Failing Tennis Courts



ATHLETIC FACILITY UPGRADES

Failing Track Drainage

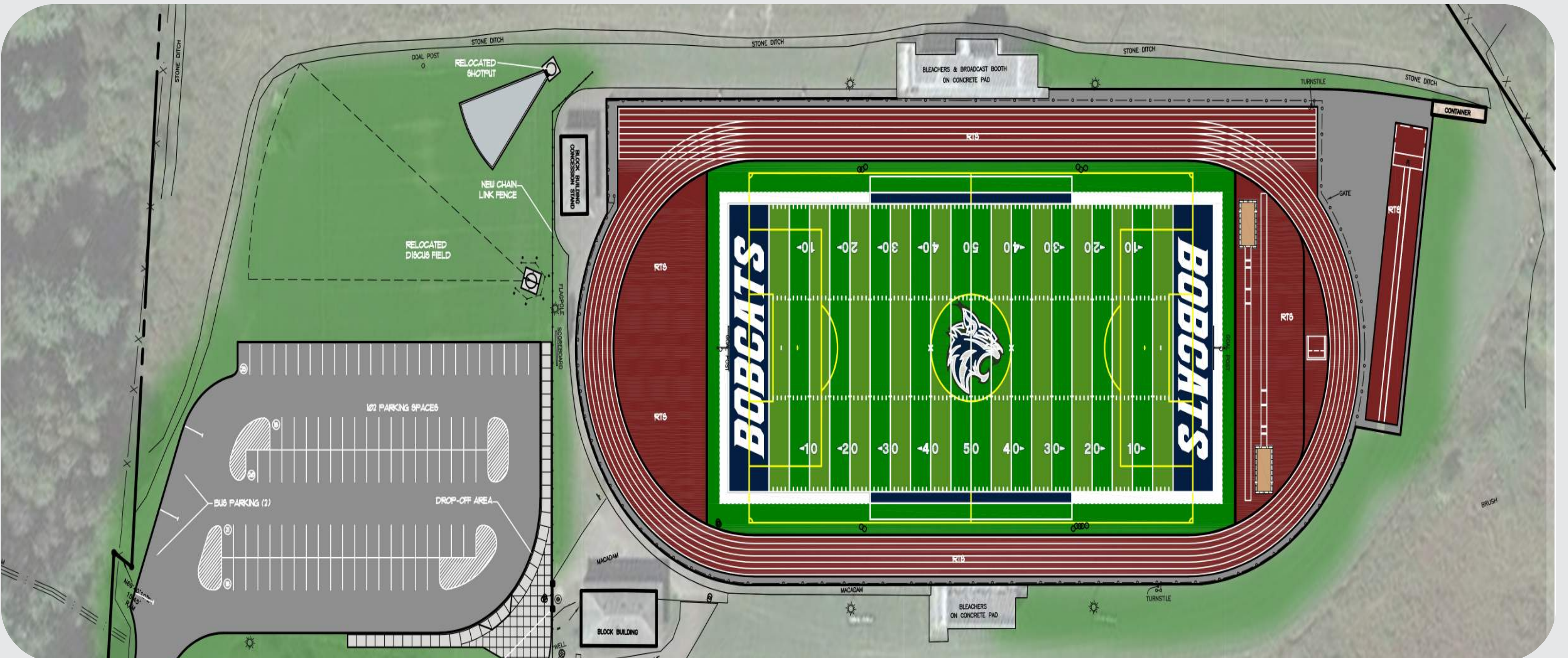


Aging Track Surfaces



- Replace existing grass athletic field with artificial turf field
- Track resurfacing and drain replacement, reconstruction of field events with addition of steeple chase pit
- 100+ Vehicle parking lot addition adjacent to athletic field
- Fencing Improvements

Rendering of New Athletic Field, Track, and Parking Lot



Capital Project Vote: Wednesday, December 7th, 12 pm - 9 pm
Voting Locations: Greenlawn Elementary School + Guilford Elementary School

NO ADDITIONAL TAX IMPACT